



# FLOW METER SA 91/F

## (MOD. SA 91/F)

Flow meter with flange connection



These series of instruments has been designed to measure the flow rate of fluids in  $l/h$ .

The measurable flow rate values range from fractions of  $m^3/h$  to  $50 m^3/h$ , with measurement accuracy that can reach up to 1% of the full scale value. The sensitivity of the instrument is also very high: it is possible to measure a flow rate equal to 1/10 of the nominal one.

## TECHNICAL FEATURES:

The instrument must be mounted in a vertical position. The direction of the fluid is from the bottom upwards.

**Measuring range:** 1-10.

**Accuracy:**  $\pm 1\%$  f.s.

**Operating temperature:** the fluid to be measured can have a temperature between  $-10$  and  $+ 300$  ° C.

**Scale length:** 120 mm.

**Construction material:** Parts in contact with the fluid are in AISI 316. Housing of the indicator in AISI 304. Degree of protection of the IP 55 indicator

**Connections:** Flanged PN 10 - PN 16 - UNI 2223

**Warranty:** on cone and float 5 years

**Watertight casing:**  $\varnothing 150$  mm

**Flow rate  $l/h$ :** DN 25 - 100/1000

DN 25 - 200/2000

DN 40 - 200/2000

DN 40 - 300/3000

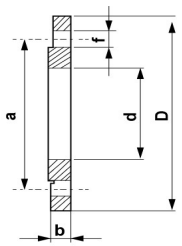
DN 40 - 500/5000

DN 50 - 800/8000

DN 50 - 2000/16000

DN 65 - 2500/25000

DN 80 - 5000/50000

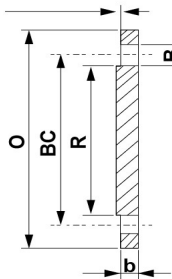


**FLAT FLANGERS UNI EN 1092-1 PN 10  
- (EX UNI 2277)- DIN 2576  
(SLIP ON)**

NOTES:  
Suggested bolts are referred (length) to exagonal head screw (+hex nut).  
In case of use of full threaded bolts (+ 2 hex nuts), chose an appropriately oversized length, to allow screwing of second hex nut.

Flanges form ND700 to ND1000 (not provided by UNI 2277) are not readily available.

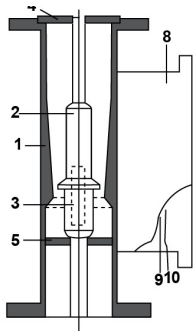
Range	ND	D	d	b	a	f	n°holes	Bolts	Weight (kg)
100/1000 200/2000	25	115	34	14	85	14	4	12x50	1.00
200/2000 300/3000 500/5000	40	150	49	16	110	18	4	16x55	1.85
800/8000 2000/16000	50	165	62	18	125	18	4	16x60	2.46
2500/25000	65	185	77	18	145	18	4	16x60	3.00
5000/50000	80 100	200 220	90 116	20 22	160 180	18 18	4 8	16x65 16x70	3.61 4.40



**BLIND FLANGES  
ASME B16.5 - Class 150 Lbs (PN20)  
"Raised Face" type**

NOTE:  
\* 22" dia blind flange not provided by ASME B16.5, but by MSS SP44  
\*\* Suggested bolts are referred (length, where indicated) to full threaded bolts (with 2 hex nuts), for "raised face" type flange.

Range	ND	D	d	b	a	f	n°holes	Bolts	Weight (kg)
100/1000 200/2000	1	108	14.3	51	79.4	4	16	1/2"x70	1
200/2000 300/3000 500/5000	1 1/2	127	17.5	73	98.4	4	16	1/2"x75	1.4
800/8000 2000/16000	2	152	19	92	120.6	4	19	5/8"x90	1.8
2500/25000	2 1/2 3	178 191	22.2 23.8	105 127	139.7 152.4	4 4	19 19	5/8"x95 5/8"x95	3.2 4.1



1	Meter's body
2	Float
3	Magnet
4	Upper guide
5	Lower guide
8	Indicator's cover
9	Indicating scale
10	Indicating point

**INSIDE**

## Certificates:

Certification of materials

MOCA certification (material objects in contact with food – on request)

Pressure gauge certification: ATEX (on request)

Pressure gauge calibration certificate (list of measured single values; 5 measurement points)

## Order information:

Flow rate / Process connection / Pipe size / Parts / Product specific weight / Certificatess